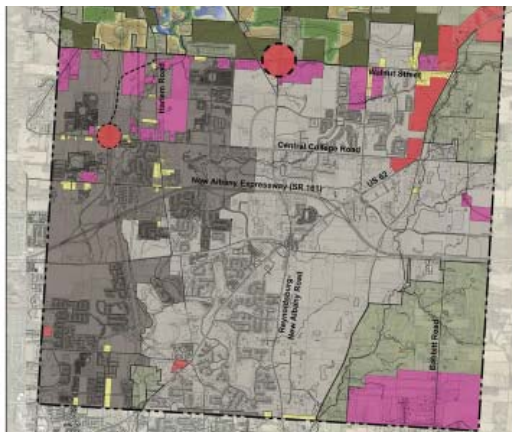


PLAIN TOWNSHIP COMPREHENSIVE PLAN



With the explosive growth of New Albany and the continuing encroachment of the Columbus, Plain Township had seen tremendous changes since the adoption of its original comprehensive plan. Continued annexations, requests for rural zonings, and loss of tax base all placed pressure on township leaders to examine the future of the township. The township was also working to adopt the Darby Accord Planning document and develop an annexation agreement between the Township, New Albany and Columbus, all creating additional pressure to update the aging community plan.

We worked with the Township to develop the project scope, schedule and budget and lead the planning, design and production of the comprehensive plan. A major challenge was the extensive coordination required with Columbus and New Albany to develop a plan that met the Township's goals while considering the needs of the region and respecting the work undertaken by the Blacklick Accord Panel. The planning effort included community outreach and education, community goal setting sessions, stakeholder meetings, and presentations to various boards and commissions. The plan provides core principles for growth of the township and included recommendations for land use, opportunities for economic development, a conservation development district, and recommendations for preservation of natural resources and community character.